



# Installation Instructions

## Part no. 2601

---

IMPORTANT: READ BEFORE INSTALLATION!!

Step 1. Place square u-bolts over frame rail, behind the axle and just forward of bed cross member (Fig 1.)

Step 2. Place clevis bracket up against the frame and secure to the square u bolt using 3/8" washers and lock nuts (Fig 2.)

Step 3. Attach the end links to the clevis brackets using 1/2" bolts, washers and locknuts. (Fig 3.)

Step 4. Attach the end links to the bar and allow the bar to hang. The end links attach to the inside of the forges (Fig 4.)

Step 5. Install bushings on to midsection of bar close to the arm bends

Step 6. Hang the round u bolts over the axle, approximately in line with the bushings on the bar.

Step 7. Place brackets over bushings, then place the plate on top, and loosely attach to the u bolts using 3/8" washers and lock nuts. Once in place slide the C shaped locking device between the axle and tighten until there is a 1/4" gap between the locking device and the axle. (Fig 5.)

Step 9. Double check that everything is securely tightened, then road test your vehicle to familiarize yourself with its new handling. As we cannot supervise your installation or driving, we cannot be held responsible for more than the cost of the kit. Remember a rear bar should never be installed unless an adequate front bar is on the vehicle.

Hardware:

(X2) 43-328-00 Brackets

(X2) 50-613-WL Bushings

(X2) 40-090-PL Plates

(X2) 46-054-00 Locking Devices

(X2) 45-031-00 8" Dogbone End Link

(X2) 35-414-00 U Bolts

(X2) 43-079-0C Clevis Brackets

(X2) 35-405-00 U Bolts

(X8) 31-104-00 3/8" Washers

(X8) 32-304-00 3/8" Locknuts

(X4) 30-415-00 1/2"X3 Bolts

(X8) 31-110-00 1/2" Washers

(X4) 32-327-00 1/2" Locknuts



Fig 1



Fig 2



Fig 3

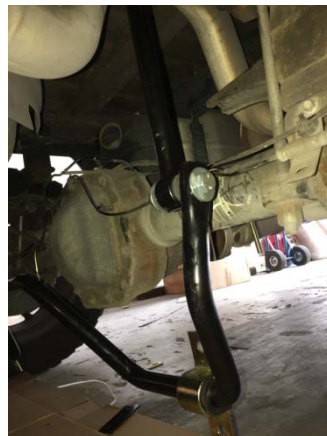


Fig 4

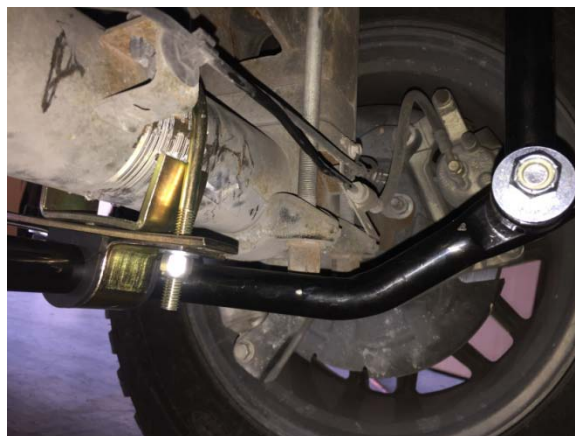


Fig 5

1601 Hill Ave · Suite H · Mangonia Park, FL 33407  
800.338.7015  
ADDCO.net